

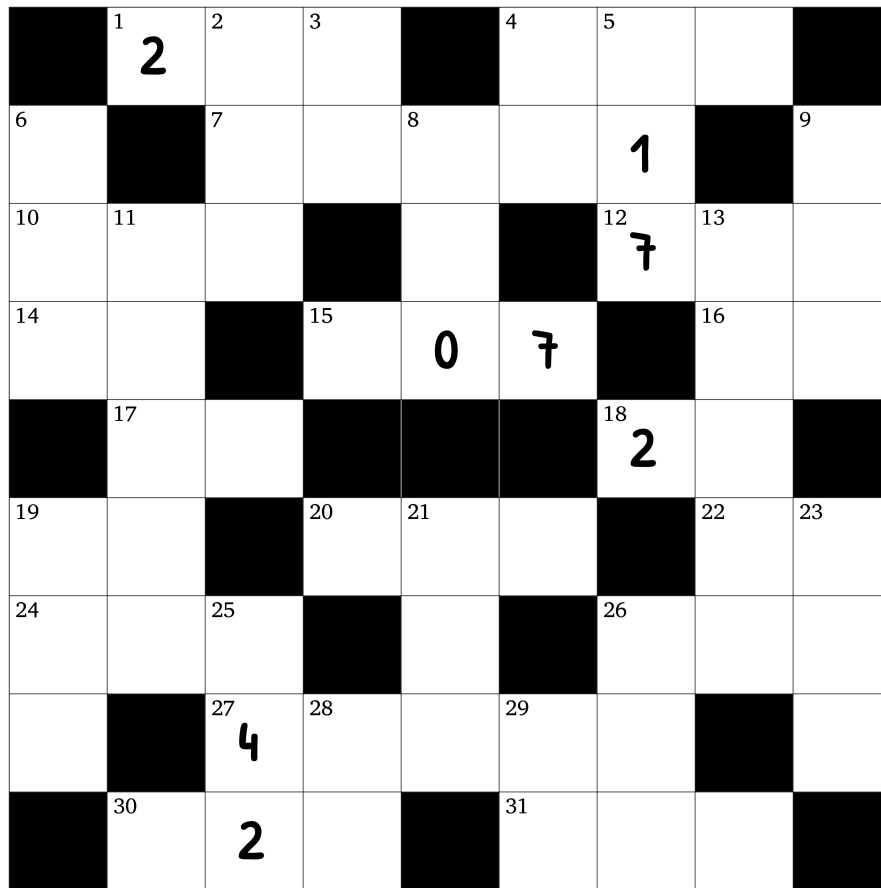
Difficulty: ☆☆☆☆☆

Cross Figure - Beginner Puzzle #4

This puzzle is like a crossword, but with numbers. Each digit occupies a square and can be a part of a "word" in the across and down directions.

Rules:

1. "Words" may not start with a zero.
2. "Words" read from left to right and top to bottom.
3. There is one unique solution which satisfies all the clues given below.
4. Some "words" may not have clues. They will be determined by the "words" which intersect them.



Across

- 1 Mean of 31 across and 5 down
- 4 23 down minus 3 down
- 7 A prime number
- 10 Mean of 9 down and 20 across
- 12 Sixty-one times 29 down
- 14 9 down minus 19 down
- 15 Mean of 6 down and 14 across
- 16 Three times 17 across
- 17 A prime number
- 18 15 across minus 31 across
- 19 1 across divided by eighteen
- 20 Consecutive digits unordered
- 22 Three-fourths of 4 down
- 24 Four times a prime number
- 26 Twenty-six times 19 across
- 27 Mean of 7 across and 28 down
- 30 A square
- 31 Mean of 5 down and 20 across

Down

- 2 30 across plus 14 across
- 3 Same as 17 across
- 4 3 down reversed
- 5 Nine times 29 down
- 6 Twice a prime number
- 8 Mean of 30 across and 4 across
- 9 Mean of 16 across and 31 across
- 11 Sixty-seven times 8 down
- 13 Twice the result of 11 down plus 12 across
- 19 Half of 26 across, then subtract 29 down
- 21 4 down plus 10 across
- 23 Twice the result of 21 down minus 22 across
- 25 30 across minus 16 across
- 26 16 across plus half of 25 down
- 28 Mean of 3 down and 19 down
- 29 25 down divided by thirty-four

Solution:

	2	5	2		9	1	1	
7		9	9	7	2	1		2
4	4	7		2		7	9	3
6	8		4	0	7		8	7
	2	9				2	0	
1	4		6	5	7		6	9
6	0	4		3		3	6	4
9		4	9	9	1	0		0
	5	2	9		3	8	7	